

From the library of  
A. Lloyd Smith

JOURNAL  
OF THE  
Tennessee Academy of Science

VOLUME XXX, NUMBER 1

CONTENTS

Report of the Director of the Reelfoot Lake Biological Station. C. L. Baker .....	1
The Barnard Astronomical Club of Nashville, Tennessee. Dr. Carl K. Seyfert .....	2
Report of the Secretary of the Tennessee Ornithological Society. Mrs. Robert J. Dunbar .....	3
Age and Rate of Growth of the Yellow Bullhead in Reelfoot Lake, Tennessee. Robert J. Schoffman .....	4
Preliminary Report on the Trichoptera of Reelfoot Lake. Sidney W. Edwards .....	8
News of Tennessee Science. Carl Tabb Bahner .....	10
Notes on Aspidogastrid Trematodes and Hydracarina from some Tennessee Mussels. Haig H. Najarian .....	11
Light Trap Collections of Punkies (Family Heleidae, Genus Culicoides) McMinn County, Tennessee, April-September, 1952. Eugene Pickard and W. E. Snow .....	15
The Family Liliaceae in Tennessee. Eleanor McGilliard .....	19
A New Branchiobdellid of the Genus Cambarincola Ellis, 1912 (Oligochaeta, Branchiobdellidae) from Kentucky. Perry C. Holt .....	27
Low Temperature Specific Heats of Layered Lattices. A. S. Dworkin and D. J. Sasmor .....	32
Notes on the Nests and Nesting of the Carolina Mountain Dusky Salamander in Tennessee and Virginia. John Thornton Wood and Frances Edmonds Wood .....	36
Status of the Black Bear in Tennessee. Vincent Schultz .....	40
Status of the Coyote and Related Forms in Tennessee. Vincent Schultz .....	44
Studies of New Mexico Ants. XIV. A Description of a New Species of Pheidole Westwood (Hymenoptera: Formicidae). A. C. Cole .....	47
XV. Additions, Corrections, and New Synonymy. A. C. Cole .....	49
Studies of Nevada Ants. I. Notes on Veromessor Lariversi M. R. Smith and a Description of the Queen (Hymenoptera: Formicidae). A. C. Cole .....	51
Elements in the Tennessee Flora with Tropical Relationships. A. J. Sharp .....	53
Mesocoestoides Jonesi, N. Sp., from the Gray Fox, with Descriptions of the Chromosome Complement and a Diphalic Specimen. H. Giordia .....	57
Cases of Interspecific "Parasitism" in Scarabaeidae (Coleoptera). Henry F. Howden .....	64
Status of the White-tailed Deer in Tennessee. Vincent Schultz .....	66

JANUARY, 1955

# JOURNAL of the Tennessee Academy of Science

## EDITORIAL STAFF

JESSE M. SHAVER, *Editor Emeritus*, George Peabody College for Teachers, Nashville

HELEN L. WARD, *Editor*, University of Tennessee, Knoxville

CARL TABB BAHNER, *News Editor*, Carson-Newman College, Jefferson City

A. C. COLE, *Zoology Editor*, University of Tennessee, Knoxville

CARL M. HILL, *Chemistry Editor*, Tennessee A and I College, Nashville

W. B. JEWELL, *Geology-Geography Editor*, Vanderbilt University, Nashville

M. L. MACQUEEN, *Mathematics Editor*, Southwestern College, Memphis

ELSIE QUARTERMAN, *Botany Editor*, Vanderbilt University, Nashville

W. ROGER RUSK, *Physics-Astronomy Editor*, University of Tennessee, Knoxville

---

Entered as second class matter at the post office at Knoxville, Tennessee, under Act of August 24, 1912, acceptance of mailing at special rate of postage provided for in Section 1103, Act of October 3, 1917, and authorized September 16, 1931.

Published quarterly, in January, April, July, and October, by the Tennessee Academy of Science at Knoxville, Tennessee.

The Journal is sent to all members not in arrears for dues. The subscription price is \$2.00 a year, invariably in advance. Single copies 75c.

All articles and communications for publication, books and publications for review, should be addressed to the Editor.

New subscriptions, changes of address, and applications for membership should be addressed to the Secretary. Personal items, news of events in the scientific world, and other notes suitable for our "News of Tennessee Science" department should be addressed to the News Editor.

---

## THE TENNESSEE ACADEMY OF SCIENCE

(Founded 1912, at Nashville, Tennessee)

Affiliated with the American Association for the Advancement of Science

### AFFILIATED SOCIETIES

Tennessee Ornithological Society, Nashville, Tennessee

Barnard Astronomical Club, Nashville

### OFFICERS

FREDERICK T. WOLF, *President*, Vanderbilt, University Nashville

CLAUDE S. CHADWICK, *Vice-President*, George Peabody College for Teachers, Nashville

JESSE M. SHAVER, *Editor Emeritus*, George Peabody College for Teachers, Nashville

HELEN L. WARD, *Editor*, University of Tennessee, Knoxville

ISABEL H. TIPTON, *Secretary*, University of Tennessee, Knoxville

JAMES W. WHITE, *Treasurer*, University of Tennessee, Knoxville

---

The Tennessee Academy of Science is very anxious to include in its membership all teachers and professors of science, research workers in science both in educational institutions and industrial establishments, and all others who are interested in some phase of science. We invite you to join our organization and take part in our activities. The annual dues are: \$3.00 for members and \$10.00 for sustaining members. They may be sent direct with your application for membership to the secretary.

## FERNS OF TENNESSEE (With The Fern Allies Excluded)

JESSE M. SHAVER, PH. D., SCI. D.

*Emeritus Professor of Biology and Formerly Head of the Department of Biology  
George Peabody College for Teachers, Nashville 5, Tennessee*

At last, after more than 13 years' work and 50,000 miles travel along the roads and trails and through the woods and swamps of all of the counties in Tennessee, Dr. Shaver has gotten out his fern book.

In a review of the first chapter, *SOME GENERAL NOTES ON FERNS*, when it was first published (*Jour. Tenn. Acad. of Science*), the late Dr. C. A. Weatherby of the Gray Herbarium at Harvard University wrote:

Dr. Jesse M. Shaver . . . has produced a veritable *vade mecum* for amateurs in ferns, at least if they happen live in or visit Tennessee. It contains, within the limits of a 25-page article, sections on the folklore of ferns, their life history, the making of blueprints and other such "nature prints" of fern leaves, the names of ferns (with an interesting little essay on the pronunciation of the Latin ones), photographing ferns, fern gardens, and growing ferns from spores. There are instructions at once concise, clear and in considerable detail for all of these activities which require them. In addition there is a good account, with map, of the chief floristic areas in Tennessee, lists of the species of ferns most characteristic of each, and a bibliography. It is hard to think of anything a beginner in the study of Tennessee ferns would need to know about, including the Fern Society, which is not touched upon.—*American Fern Journal*, 33 (1):34, 1943.

The second chapter is entitled *DESCRIPTIONS OF THE FERNS OF TENNESSEE*. It constitutes most of the book and treats of the different species of ferns one by one in order. All of the species are carefully described and beautifully illustrated by line drawings and most of them by photographs of the plants in their natural habitats. Many of the drawings are in reality plates (although called figures) for each is usually composed of several separate drawings with some greatly enlarged to show characteristics of importance in identification. There are 113 of these plate-like figures, 74 of the habit photographs of ferns, and 54 Tennessee maps giving county distribution within the state. As the various fern studies that make up this chapter were completed, they were published in journals. Then they were reviewed by Dr. C. V. Morton of the Smithsonian Institution of Washington in the *American Fern Journal*. One of these reviews contained this statement:

Dr. Jesse M. Shaver . . . is the principal authority on the ferns of Tennessee . . . Dr. Shaver's work is careful and thorough; as Dr. S. F. Blake remarked, his treatment is altogether the most elaborate publication on ferns in American literature. . . . If these papers could only be all brought together in book form when the work is completed (the present book shows that this has been done) they would undoubtedly be among the most frequently consulted and cited works.

Dr. Shaver's treatment includes detailed descriptions, distributional maps, photographs of the plants *in situ*, and most excellent line drawings with magnified details. Volume 41 (3):94-96, 1951.

The third chapter, *FERN DISTRIBUTION IN TENNESSEE*, supplements the data previously given in the maps by adding a specific location for each fern in each county in which the fern has been found.

In the *GLOSSARY*, there is a genuine attempt to define adequately all technical terms used in the book.

There is an *INDEX TO LATIN NAMES OF GENERA AND SPECIES* and also an *INDEX TO COMMON NAMES*.

*Pages xviii plus 502, with 243 numbered and 3 unnumbered figures.*

*Price, \$6.00, with 15 cents postage extra.*

*(Edition limited to 1100 copies)*

YOU CAN DEPEND ON WARD'S  
FOR

**Professional Quality  
Reliable Service**

*Serving the Biological and  
Geological Sciences with*

**SPECIMENS    EQUIPMENT  
TEACHING AIDS**

Living and Preserved Materials, Mineral Collections, Microscope Slides, Models, Biology and Geology Field and Laboratory Equipment, Color Slides for Both Sciences, Charts, Human and Animal Skeletons, Fossils, Bio-Plastic Mounts and Liquid Bio-Plastic.

*Write on your school letterhead for  
free catalog. Specify field of interest.*

**WARD'S NATURAL SCIENCE ESTABLISHMENT, Inc.**  
**P. O. Box 24, Beechwood Station, Rochester 9, N. Y.**

**Hubert E. Hodge Printing Co.**

*Stationery — Office Forms  
Bookkeeping Machine Forms  
Programs — Announcements  
Publications*

*Engraved Wedding Invitations and  
Announcements, Engraved Stationery,  
Calling Cards and Business Cards*

Telephone 4-9881  
1800-1802 Grand Avenue  
KNOXVILLE 1, TENNESSEE

# CAROLINA CULTURES

## A Dependable Culture Service

Class of:	25	50	75	100
L1 Giant Amoeba proteus (standard for study)	\$2.00	\$3.50	\$4.75	\$6.00
L2 Paramecium multimicronucleatum (giant form; excellent for laboratory study)	1.50	2.50	3.25	4.00
L220 Planaria maculata or dorotocephala (maculata, light colored species, is generally preferred)	2.00	3.50	4.75	6.00

### SAME PRICE AS AMOEBA:

P. caudatum	Stentor	Peranema	Spirostomum	Eudorina
P. aurelia	Vorticella	Volvox	Chlamydomonas	Pandorina
Actinosphaerium		Desmids		Pelomyxa
Mixed Protozoa		Hydra		

### SAME PRICE AS PARAMECIUM:

Euglena	Chilomonas	Euplotes	Copepods	Spirogyra	Elodea
Arcella	Centropyxis	Daphnia	Diatoms	Nitella	Rotifers
	Vinegar Eels			Oscillatoria	

To expedite handling at transfer points in transit all living cultures are shipped Special Delivery same day received, or according to customer's shipping schedule. The above prices include container. Postage and Special Delivery are charged to the customer.

For Drosophila cultures, Tenebrio or "Meal-worms," Aquarium Sets or Assortments, living Frogs, Turtles, Rats, Mice, etc., see our Catalogue number 18.

Cultures of Bacteria and Fungi are also available.

We have a complete line of Preserved Specimens, Microscope Slides, Kodachromes, Dissecting Instruments, etc. Our publications—CAROLINA TIPS and Catalogue number 18—will be sent free upon application.

**CAROLINA BIOLOGICAL SUPPLY COMPANY**  
Elon College, North Carolina

## Turtox Moves to New Laboratories

On January first we moved into our new Turtox plant in the southwest section of Chicago. In this modern office and laboratory building we have greatly increased office space, the finest biological laboratories, ample and uncrowded areas for stock and for the assembly of orders, and very efficient shipping facilities. All of these factors will help us to render better and faster service to the users of Turtox Products. Please visit us when you are in Chicago—our new site includes parking space for many cars.

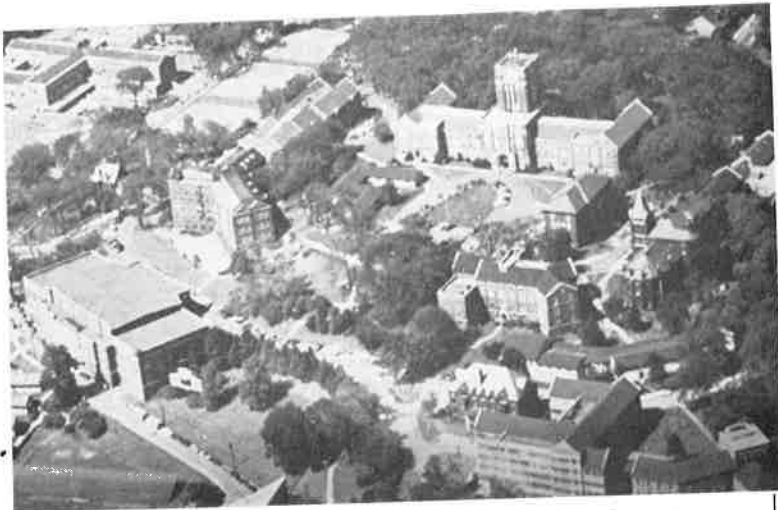
Our new address is:

**8200 SOUTH HOYNE AVENUE,  
CHICAGO 20, ILLINOIS**

**GENERAL BIOLOGICAL SUPPLY HOUSE**

Incorporated

**8200 South Hoyne Avenue — Chicago 20, Illinois**



The University of Tennessee's Knoxville Campus

**Opportunities for Study and Research in Science at  
THE UNIVERSITY OF TENNESSEE  
SUMMER QUARTER, 1955**

**Study Toward Bachelor's and Master's Degrees in**

Agriculture ● Bacteriology ● Botany  
Chemistry ● Engineering ● Entomology  
Geography ● Geology ● Home Economics  
Mathematics ● Physics ● Psychology ● Zoology

**Study Toward Doctor of Philosophy Degree in**

Bacteriology ● Botany ● Chemical Engineering  
Chemistry ● Entomology ● Geology ● Physics  
Mathematics ● Psychology ● Zoology

**For Catalog, Admission Information, write:  
Dean of Admissions  
The University of Tennessee  
Knoxville, Tennessee**