

*From the library of  
W. H. Floyd Scott*

**JOURNAL**  
OF THE  
**Tennessee Academy of Science**

Volume XXVIII, Number 4

CONTENTS

	PAGE
SOME PERCID FISHES OF CERTAIN TENNESSEE COUNTIES. W. S. WOOLCOTT .....	245
THE GRAPEFERNS IN TENNESSEE. JESSE M. SHAVER .....	246
TAXONOMY OF MAN-MADE OBJECTS. JOHN D. TRIMMER	279
NEWS OF TENNESSEE SCIENCE. CLAUDE S. CHADWICK	284
THE QUADRIC OF WILCZYNSKI. M. L. MACQUEEN .....	285
SOME STUDIES ON GALUMNA VIRGINIENSIS AND MONIEZIA EXPANSA. (ACARINA: ORIBATOIDEA; CESTODA: ANOPLOCEPHALIDAE). J. M. EDNEY AND GEORGE W. KELLEY, JR. ....	287
STUDIES OF NEW MEXICO ANTS. V. THE GENUS PHEIDOLE WITH SYNONYMY (HYMENOPTERA: FORMICIDAE). A. C. COLE .....	297
VI. THE GENERA MONOMORIUM, SOLENOPSIS, MYRMECINA, AND TRACHYMYRMEX (HYMENOPTERA: FORMICIDAE). A. C. COLE .....	299
THE CHROMOSOMES OF SPIRORCHIS MAGNITESTIS BYRD (TREMATODA, DIGENEA). ARTHUR W. JONES AND THOMAS C. MAYER .....	301
USE OF THE GROUP METHOD IN TEACHING HIGH SCHOOL PHYSICS. JOHN THOMAS JOHNSON .....	305
SOME NOTES ON GEOMETRY AS A SCHOOL SUBJECT. G. H. LUNDBERG .....	307
TENNESSEE RECORDS FOR ZORAPTERA. T. P. COPPLAND .....	314
INDEX TO VOLUME XXVIII, 1953 .....	315

October, 1953

# JOURNAL

of the  
Tennessee Academy of Science

## EDITORIAL STAFF

- JESSE M. SHAVER, *Editor*, George Peabody College for Teachers, Nashville.  
HARRY MONK, *Ornithology Editor*, Ovoca Apartments, Nashville.  
W. ROGER RUSK, *Physics-Astronomy*, University of Tennessee, Knoxville.  
CLAUDE S. CHADWICK, *News Editor*, George Peabody College for Teachers, Nashville.  
M. L. MACQUEEN, *Mathematics Editor*, Southwestern, Memphis.  
ELSIE QUARTERMAN, *Botany Editor*, Vanderbilt University, Nashville.  
A. C. COLE, *Zoology Editor*, University of Tennessee, Knoxville.
- 

Entered as second class matter February 12, 1926, at the post office at Nashville, Tennessee, under Act of August 24, 1912, acceptance of mailing at special rate of postage provided for in Section 1103, Act of October 3, 1917, and authorized September 16, 1931.

Published quarterly, in January, April, July, and October, by the Tennessee Academy of Science at Nashville, Tennessee.

The Journal is sent to all members not in arrears for dues. The subscription price is \$2.00 a year, invariably in advance. Single copies 50c.

All articles and communications for publication, books and publications for review should be addressed to the Editor.

New subscriptions, changes of address, and applications for membership should be addressed to the Secretary. Personal items, news of events in the scientific world, and other notes suitable for our "News of Tennessee Science" department should be addressed to the News Editor.

---

## THE TENNESSEE ACADEMY OF SCIENCE

(FOUNDED 1912, AT NASHVILLE, TENNESSEE)

Affiliated with the American Association for the Advancement of Science

### AFFILIATED SOCIETIES

Tennessee Ornithological Society, Nashville, Tennessee.  
Barnard Astronomical Club, Nashville.

### OFFICERS

A. J. SHARP, *President*, University of Tennessee, Knoxville.  
MYRON S. McCAY, *Vice-President*, University of Chattanooga, Chattanooga.  
JESSE M. SHAVER, *Editor*, George Peabody College for Teachers, Nashville.  
ISABEL H. TIPTON, *Secretary*, University of Tennessee, Knoxville.  
JAMES W. WHITE, *Treasurer*, University of Tennessee, Knoxville.

---

The Tennessee Academy of Science is very anxious to include in its membership all teachers and professors of science, research workers in science both in educational institutions and industrial establishments, and all others who are interested in some phase of science. We invite you to join our organization and take part in our activities. The annual dues are: \$3.00 for members and \$10.00 for sustaining members. They may be sent direct with your application for membership to the secretary.

**In visual or  
photographic microscopy...  
finest, truest micro-images  
known to  
science!**



You get clear, sharp, distortion-free images with the superb apochromatic objectives of Bausch & Lomb Research Microscopes. Entire optical system is BALCOTED to eliminate internal reflection and minimize flare . . . to ensure image brilliance. Slow-motion, low-position fine focusing adjustment assures lifetime mechanical accuracy. Choose from the complete line, for general or highly specialized studies.

**IN ALL MONOCULAR APPLICATIONS**

Quickly interchangeable monocular tube permits maximum use of widest range of photo, measuring, projection accessories.



**IN HIGH POWER AND LOW POWER PHOTOMICROGRAPHY**

The world's finest micro-images are photographed with unequalled accuracy and versatility by Photomicrographic Equipment Model L.



**IN "ON-THE-SPOT" PHOTOMICROGRAPHY**

The eyepiece camera fits monocular tube for quick projection slides, "work-in-progress" records.



**WRITE** for demonstration and catalog. Bausch & Lomb Optical Co., 65722 St. Paul St., Rochester 2, New York.



BAUSCH & LOMB CENTENNIAL

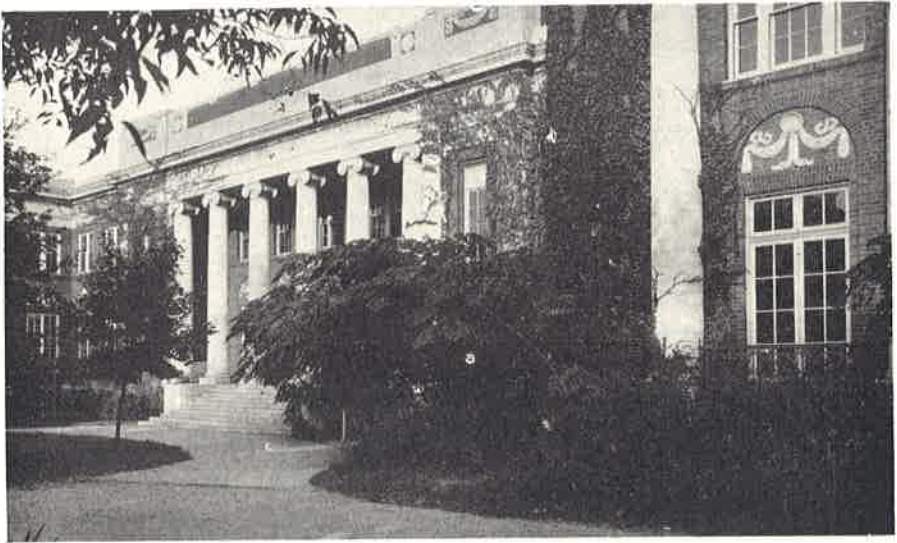


**Bausch & Lomb** *Research* **Microscopes**

# A SCIENCE CURRICULUM

ESPECIALLY ARRANGED FOR PREPARING TEACHERS OF SCIENCE.

The prospective teacher may get a minimum of three years in one science (Biology or Chemistry), two years in a second science, and one year in the third science, with the courses in Psychology and Education required for a teaching certificate, including practice teaching in science. Graduate work through the master's



degree given in biology and chemistry in order to prepare teachers for the larger high schools or for teaching positions in small colleges.

*Write for catalogue mentioning the field of your interest to*

THE SECRETARY  
GEORGE PEABODY COLLEGE  
FOR TEACHERS  
NASHVILLE 5, TENNESSEE