

*From the library of  
The Boyd Scott*

**JOURNAL**  
of the  
**Tennessee Academy of Science**

VOLUME XXVII, NUMBER 4

CONTENTS

	PAGE
THE PUBLICATION RECORDS OF CERTAIN AMERICAN CHEMISTS. ROBERT T. LAGEMANN .....	241
THE ROYALFERN, THE CINNAMONFERN, AND THE INTERRUPTED-FERN IN TENNESSEE. JESSE M. SHAVER .....	248
BEFORE THE CHEROKEE. FRED W. FISCHER .....	265
NEW LIFE MEMBERS .....	268
LUCIUS E. BURCH, JR., HONORARY MEMBER, 1951 .....	269
NEWS OF TENNESSEE SCIENCE. CLAUDE S. CHADWICK ..	270
NOTES ON SOUTHERN APPALACHIAN FUNGI, X. L. R. HESLER .....	271
NOTES ON THE PHEIDOLE PILIFERA (ROGER) COMPLEX AND A DESCRIPTION OF A NEW SUBSPECIES (HYMENOPTERA: FORMICIDAE). A. C. COLB .....	278
A NON-ASSOCIATIVE ALGEBRA GENERATED BY SQUARE MATRICES. GRADY C. HOLT .....	281
GRASSY COVE, A UVALA IN THE CUMBERLAND PLATEAU, TENNESSEE. CHARLES F. LANE .....	291
AN EXPERIMENTAL STUDY OF THE EFFECTS OF DEXEDRINE (D-AMPHETAMINE SULFATE) UPON MOTOR AND MENTAL PERFORMANCE AND SOME FACTORS IN MOOD. JOHN C. BALLOCH, THOMAS A. LA-SAINE, and JAMES M. ROBINSON .....	296
A BIOLOGICAL APPROACH TO THE STUDY AND CONTROL OF ACID MINE POLLUTION. JOHN W. PARSONS	304
NOTES ON THE OCCURRENCE OF THE LONG-TAILED SALAMANDER, EURYCEA LONGICAUDATA PERNIX, IN MIDDLE TENNESSEE. THOMAS C. BARR, JR. ....	310
INDEX TO VOLUME XXVII, 1952 .....	311

OCTOBER, 1952

# JOURNAL

of the  
Tennessee Academy of Science

## EDITORIAL STAFF

JESSE M. SHAVER, *Editor*, George Peabody College for Teachers, Nashville.  
HARRY MONK, *Ornithology Editor*, Ovoca Apartments, Nashville.  
W. ROGER RUSK, *Physics-Astronomy*, University of Tennessee, Knoxville.  
CHARLES S. SHOUP, *News Editor*, Biology Division, U. S. Atomic Energy Commission, Oak Ridge.  
M. L. MACQUEEN, *Mathematics Editor*, Southwestern, Memphis.  
ELSIE QUARTERMAN, *Botany Editor*, Vanderbilt University, Nashville.  
A. C. COLE, *Zoology Editor*, University of Tennessee, Knoxville.

---

Entered as second class matter February 12, 1926, at the post office at Nashville, Tennessee, under Act of August 24, 1912, acceptance of mailing at special rate of postage provided for in Section 1103, Act of October 3, 1917, and authorized September 16, 1931.

Published quarterly, in January, April, July, and October, by the Tennessee Academy of Science at Nashville, Tennessee.

The Journal is sent to all members not in arrears for dues. The subscription price is \$2.00 a year, invariably in advance. Single copies 50c.

All articles and communications for publication, books and publications for review should be addressed to the Editor.

New subscriptions, changes of address, and applications for membership should be addressed to the Secretary. Personal items, news of events in the scientific world, and other notes suitable for our "News of Tennessee Science" department should be addressed to the News Editor.

---

## THE TENNESSEE ACADEMY OF SCIENCE

(FOUNDED, 1912, AT NASHVILLE, TENNESSEE)

Affiliated with the American Association for the Advancement of Science

### AFFILIATED SOCIETIES

Tennessee Ornithological Society, Nashville, Tennessee.  
Barnard Astronomical Club, Nashville.

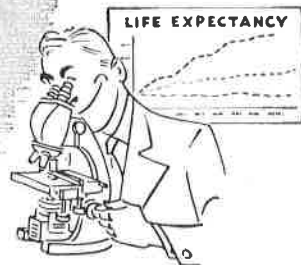
### OFFICERS

CARL K. SEYFERT, *President*, Vanderbilt University, Nashville.  
A. J. SHARP, *Vice-President*, University of Tennessee, Knoxville.  
JESSE M. SHAVER, *Editor*, George Peabody College for Teachers, Nashville.  
ELSIE QUARTERMAN, *Secretary*, Vanderbilt University, Nashville.  
MOFFAT G. BOYCE, *Treasurer*, Vanderbilt University, Nashville.

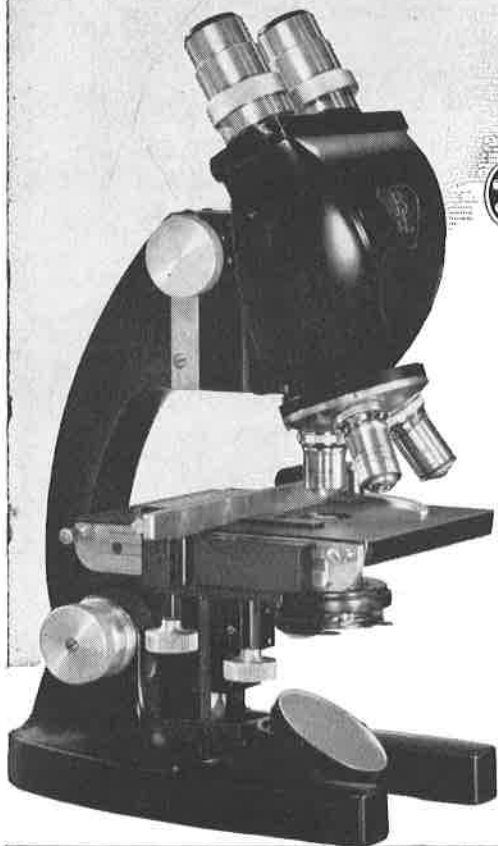
---

The Tennessee Academy of Science is very anxious to include in its membership all teachers and professors of science, research workers in science both in educational institutions and industrial establishments, and all others who are interested in some phase of science. We invite you to join our organization and take part in our activities. The annual dues are: \$3.00 for members and \$10.00 for sustaining members. They may be sent direct with your application for membership to the secretary.

# LONGEST LIFE EXPECTANCY



**of any laboratory microscope ever made**



**BAUSCH & LOMB**

*Dynoptic*

**LABORATORY  
MICROSCOPES**

Frictionless Dynoptic design reduces wear  
... gives you unequalled focusing ease  
... adds many years to the life of your  
Bausch & Lomb Laboratory Microscope.  
Entire fine focusing system floats on ball  
bearings and rollers ... never binding,  
never drifting out of focus.

To this, and the many other long-life  
mechanical features, is added the world's  
finest optical system, resulting in  
*the world's finest laboratory microscope.*



*Write* for FREE DEMONSTRATION and LITERATURE. See  
for yourself how Bausch & Lomb Dynoptic Microscopes out-  
perform any laboratory microscope ever made. Bausch &  
Lomb Optical Co., 65710 St. Paul St., Rochester 2, N. Y.



When you use the cat in your Zoology classes, you can depend on WARD'S Embalmed Cats for

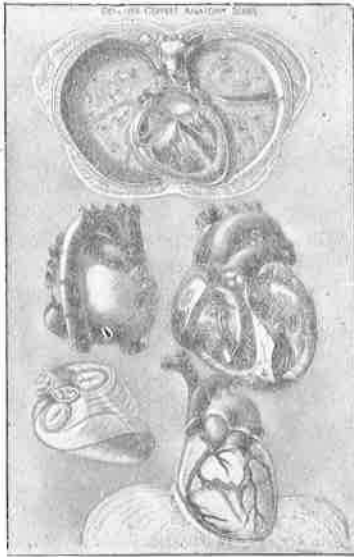
**Skillful Preparation**  
**Convenient Packaging**  
**Delivery When Desired**

*The Standard of Preserved Dissection Material*

Thoroughly embalmed, blood vessels singly, doubly or triply latex-injected or plain, each specimen is shipped in an individual waterproof plastic storage bag.

SEND FOR CATALOG AND LATEST PRICES

**WARD'S** NATURAL SCIENCE ESTABLISHMENT, Inc.  
3000 RIDGE ROAD EAST • ROCHESTER, N. Y.



**Maximum**  
**Teaching Value**

*with these*

**Masterpieces**  
*of*  
**Anatomical Art**

The Kampmeier Series  
on functional anatomy

Ten charts each 42"x72"

*For complete description*  
*write to:*

**DENOYER - GEPPERT COMPANY**

5235 Ravenswood Avenue

Chicago 40, Illinois

# CAROLINA CULTURES

## A Dependable Culture Service

	Class of:	25	50	75	100
L1	Giant Amoeba proteus (standard for study)	\$2.00	\$3.50	\$4.75	\$6.00
L2	Paramecium multimicronucleatum (giant form; excellent for laboratory study)	1.50	2.50	3.25	4.00
L220	Planaria maculata or dorotocephala (maculata, light colored species, is generally preferred)	2.00	3.50	4.75	6.00

### SAME PRICE AS AMOEBIA:

P. caudatum	Stentor	Peranema	Spirostomum	Eudorina	Actinosphaerium
P. aurelia	Vorticella Desmids	Volvox	Chlamydomonas Hydra	Pandorina Pelomyxa	Mixed Protozoa

### SAME PRICE AS PARAMECIUM:

Euglena	Chilomonas	Euplotes	Copepods	Spirogyra	Flodea
Arcella	Centropyxis Vinegar Eels	Daphnia	Diatoms	Nitella	Rotifers
				Oscillatoria	

To expedite handling at transfer points in transit all living cultures are shipped Special Delivery same day received, or according to customer's shipping schedule. The above prices include container. Postage and Special Delivery are charged to the customer.

For Drosophila cultures, Tenebrio or "Meal-worms," Aquarium Sets or Assortments, living Frogs, Turtles, Rats, Mice, etc., see our Catalogue number 18.

Cultures of Bacteria and Fungi are also available.

We have a complete line of Preserved Specimens, Microscope Slides, Kodachromes, Dissecting Instruments, etc. Our publications—CAROLINA TIPS and Catalogue number 18—will be sent free upon application.

## CAROLINA BIOLOGICAL SUPPLY COMPANY

ELON COLLEGE, NORTH CAROLINA

## Do You Want Copies of These Special Turtox Catalogs?

● New editions of these special catalogs and pricelists are now ready, but they are being mailed only to teachers who request them. Write for free copies of the ones you want.

*Biological and Anatomical Models.* An illustrated catalog of all the Turtox Unbreakable Models for Biology, Botany, Zoology, Embryology and Human Anatomy.

*Specimens in Turtox Plastic.* An entirely new list of the plant and animal specimens embedded in blocks of crystal-clear Turtox Plastic.

*Parasitological Microscope Slides.* A special pricelist of all of our slides of parasites of man and domestic animals, including many new preparations.

*Embryological Microscope Slides.* An illustrated catalog of all Turtox slides for embryology courses.

*Three-Way Checklist of Biological Drawings.* A handy reference list of the three hundred-plus subjects offered as Turtox Key Cards, Quiz Sheets and Class-Room Charts.

*Human Histology Kodachromes.* The famous University of Illinois transparencies of human histology. Included are many new lantern slides made during 1952.

## GENERAL BIOLOGICAL SUPPLY HOUSE, Inc.

761-763 EAST 69th PLACE

CHICAGO 37, ILLINOIS

# **A SCIENCE CURRICULUM**

Especially arranged for preparing teachers of science. The prospective teacher may get as much as three years in one science (Biology or Chemistry), two years in a second science, and one year in the third science, with the courses in Psychology and Education required for a teaching certificate, including practice teaching in science. Graduate work through the master's degree given in biology and chemistry in order to prepare teachers for the larger high schools or for teaching positions in small colleges.

*Write for catalogue mentioning the field of your interest to*

THE SECRETARY

**GEORGE PEABODY COLLEGE FOR TEACHERS**  
NASHVILLE 5, TENNESSEE

**Good Printers  
to Good People**

**PRINTING  
LITHOGRAPHING**

**Cullom & Gertner Co.**

600 TWENTY-FIRST AVENUE, NORTH  
NASHVILLE 4, TENNESSEE